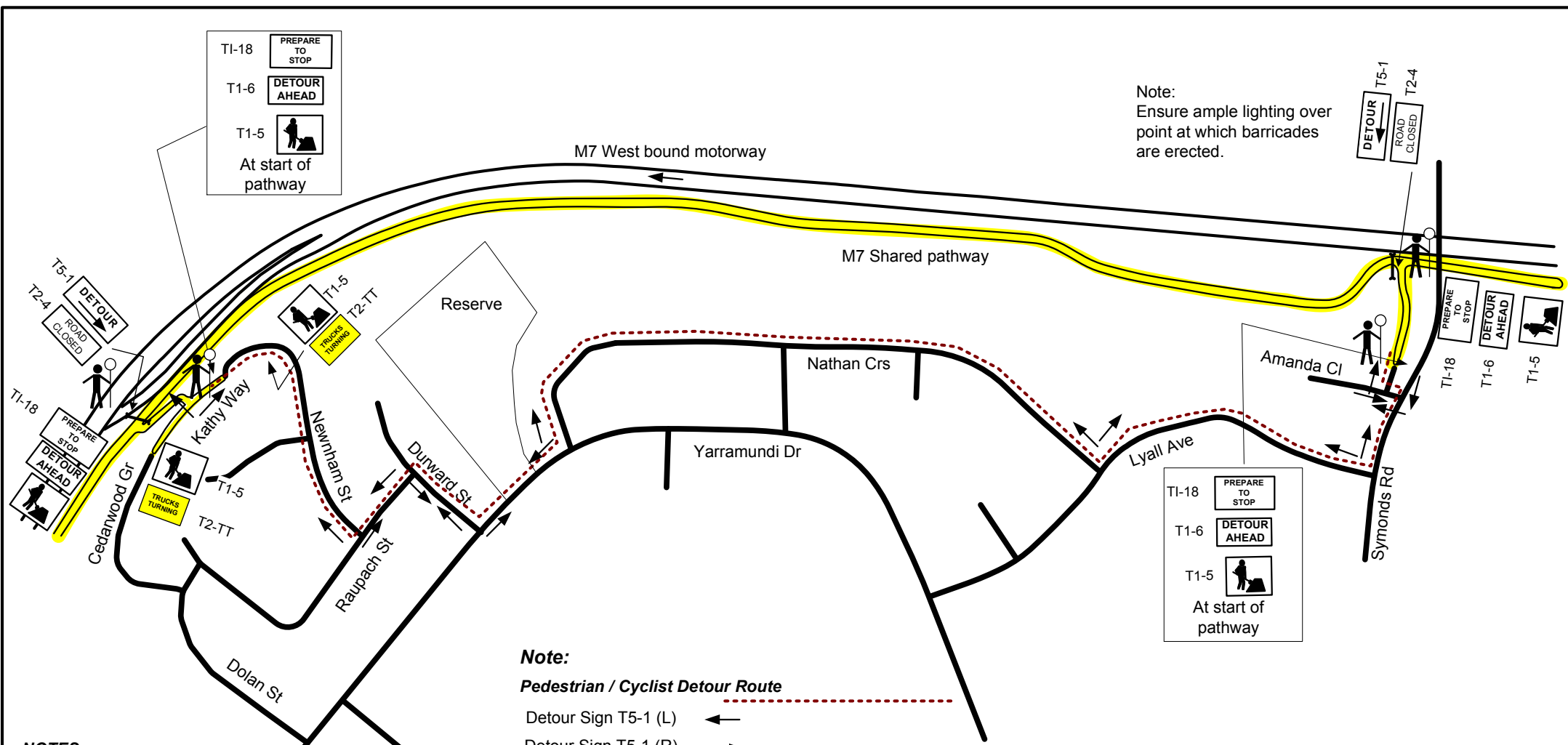


Note:  
Ensure ample lighting over point at which barricades are erected.



**Note:**  
**Pedestrian / Cyclist Detour Route**  
Detour Sign T5-1 (L) ←  
Detour Sign T5-1 (R) →

- NOTES**
- a) This plan is drawn in accordance with RTA's TCA manual & AS1742.3 2009
  - b) .5Dm between signs 2D from last sign to start of tapers or traffic controller.
  - c) All temporary signage to be size 'B' 1200x900mm while all distances are in metres.
  - d) While work is undertaken all contradictory signage must be covered or removed. Special consideration will be given to the adjacent work site.
  - e) While traffic controllers are not working sign T1-200 shall be covered or removed. All temporary signs will be removed when site works are not being undertaken.



TCP24-221.VSD Modified By \_\_\_\_\_ Print \_\_\_\_\_ Signed \_\_\_\_\_ Certificate No. \_\_\_\_\_

**REVISION 4**

**TRAFFIC CONTROL PLAN**

<b>Orbital Traffic Management Pty Ltd</b>			
3/480 Victoria Street Wetherill Park 2164 Phn 029729 3511			
Client: Abi-Leighton			
Site: Shared Pathway/M7 Dean Park			
Date Drawn:	31/05/10	Scale	NTS
Drawn By:	S.Hynes	Reference No.	TCP24-221
Checked By:	Certificate No. 2163004190	Signed	